

## Birdhead

*Birdhead World - Clorionline City*

Art Basel Hong Kong 2025  
26 March - 30 March 2025

INSIGHTS SECTOR  
Booth 3C49



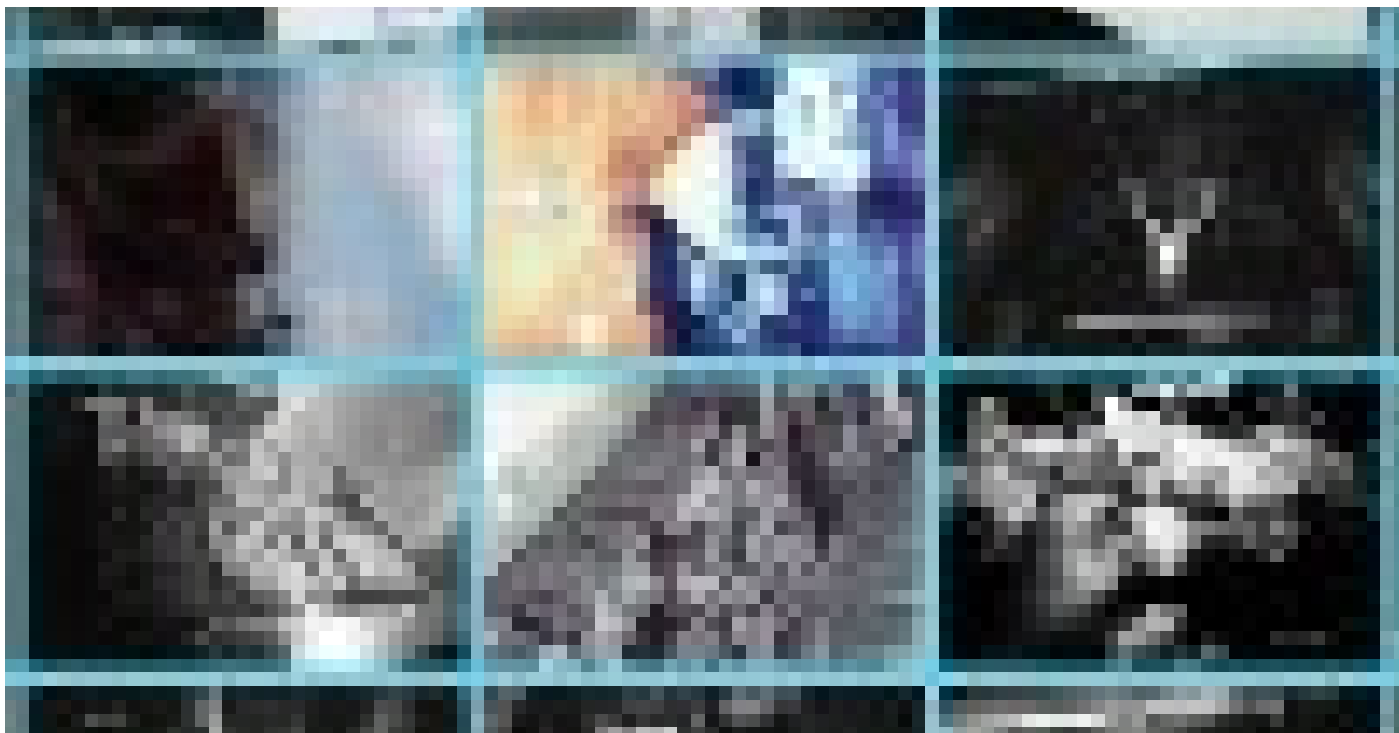
*Birdhead World - Clorionline City*, 2025  
UV paper, acrylic  
158 x 452 cm / 62 1/4 x 178 in  
Edition of 3

Flowers Gallery is pleased to announce its participation at Art Basel Hong Kong with *Clorionline City* (2025), a new iteration of the *Birdhead World Matrix* series by the artist collective Birdhead, composed of Shanghai-based Ji Weiyu and Song Tao.

*Clorionline City* (2025) is an installation of 124 recontextualized photographs taken in Hong Kong over the last decade. In *Birdhead World Matrix*, each image is visually and sensorially rich, balancing the duality of abstraction and figuration. *Clorionline City* continues this visual language, presenting a fictional urban scene set against the backdrop of Hong Kong, weaving together reality and imagination across different points in time.

The title of the work is inspired by the bilingual names of many Hong Kong streets, where the English and Cantonese versions often sound alike but carry different meanings. For example, Sycamore Street refers to a type of tree in English, while its Cantonese name, '詩歌舞街 (Sigo - mo - gai)', translates to 'Poetry - Song - Dance - Street.' In creating the title of the new work, Birdhead applied a similar process, first reversing 'Lion Rock,' then transliterating it into Chinese as '克洛昂徠,' a newly invented phrase that can be read as 'Clorionline' in English. Birdhead employs this neologism 'Clorionline' to refer to the reversed and freely used images in this new installation.

Deeply inspired by the artists' experience of Hong Kong, *Clorionline City* combines 124 color and monochrome photographs into a single work, balancing abstract structures and figurative content. This installation introduces the opposing elements of color and monochrome, challenging their coexistence.



*Birdhead World - Clorionline City (Detail), 2025*

## About the Artists

Consisting of Song Tao (b. 1979) and Ji Weiyu (b. 1980), Birdhead was established in Shanghai in 2004. The name *Birdhead* came from a random keystroke of file naming. Capturing all the beings around them, the two members of Birdhead explore the possibilities of photography and apply their reflection of conceptual art into the context of their image interpretation, with works that employ the photographic image through collage, installation, photo books, and other media.

Important exhibitions include *Birdhead: Yun Yun*, UCCA Dune, China (2024); *KYOTOGRAPHIE*, Kyoto (2024); *Feeling the Stones*, Diriyah Biennale, Saudi Arabia (2021); *Wave*, Power Station of Art, Shanghai (2020), *Living Cities*, Tate Modern, London (2017), *New Photography 2012*, MOMA, New York (2012 - 2013), and *ILLUMInations* the main exhibition of the 54th Venice Biennale (2011). Birdhead's work can be found in important collections internationally, including; Tate Modern (London), MOMA (New York), Power Station of Art (Shanghai), Astrup Fearnley Museum of Modern Art (Norway) and the Guy & Myriam Ullens Foundation (Switzerland) amongst others.

Image Credits:

© Birdhead, courtesy of Flowers Gallery

For more information and images please contact:

Echo Guo: [echo@flowersgallery.com](mailto:echo@flowersgallery.com) or Leighanne Murray: [leighanne@atelierpublicrelations.com](mailto:leighanne@atelierpublicrelations.com)

Facebook [@flowersgalleries](#)

Instagram [@flowersgallery](#)

**Movana Chen***Beyond the Surface*

Art Basel Hong Kong 2025

26 March - 30 March 2025

ENCOUNTERS SECTOR

Flowers Gallery is delighted to present a series of installations in the Encounters sector by Hong Kong and Lisbon-based artist Movana Chen, including *Beyond the Surface*, *Dreconstructing* and *Questioning the Line*.

"Can we look together, beyond the surface?" asks Movana Chen in her new, evolving work, in which she interweaves the identities of people around the world as one humanity. This question highlights a central pillar of Chen's work: facilitating dialogue and connection across cultures.

In *Questioning the Line* (2023-ongoing), Chen and a dancer subvert human divisions through performance. Inside Chen's interconnected *Body Container*, they form a living statue periodically during the exhibition\*, using movement and stillness to explore human relationships, both with each other and the landscapes they inhabit. Chen has performed this piece in nature and across the world, fostering shared experiences that transcend geopolitical borders, a theme reflected in the maps that serve as the material of the work.



*Beyond the Surface*, 2024 - ongoing  
Knitted, shredded travel documents  
800 x 15 x 5 cm / 315 x 5 7/8 x 2 in

Chen began her practice by forming dresses from her collection of fashion magazines dating back to 1997. Twenty-four of her pieces have been further recontextualized to form the monumental installation *Dreconstructing* (2004-2008). The outlines of the human form remain visible in seams and circular apertures, now joined into a larger communal body. Rendered illegible through the process, scripts from multiple languages, Chinese, Japanese, English, and Korean, remain visible, reflecting Chen's intention to foster connections across borders.

*Beyond the Surface* (2024-ongoing) is a deeply personal exploration of human identity and connection. It begins with Chen collecting expired passports in person from people willing to share them and offer their individual stories. Chen describes this process as representative of "our human need - this pure love, not an identity of paper." She shreds the passports, deconstructing the individual identity, and knits the strands together, intertwined with the passports of others, (re)constructing one large interconnected body.



## ABOUT THE ARTIST

Movana Chen (b.1974) is an artist based in Hong Kong and Lisbon. Chen's multidisciplinary practice is rooted in the exploration of communication across cultures, deconstructing and reconstructing dictionaries, maps and paper forms to create sculptural installations and wearable works that represent new forms of language. Her work is a fusion of media, performance, installation and sculpture.

Her work has been shown at *Factory of Tomorrow*, CHAT 5th anniversary exhibition, Hong Kong (2024), *The Open World*, the third edition of Thailand Biennale, Chiang Rai (2023 - 2024); *Knitting Conversations*, Focus Gallery, M+, Hong Kong (2024) and *Body Container: Questioning the Line*, Asia Art Archive, Hong Kong (2024).

Chen studied Fashion Design at the London College of Fashion, UK, and Fine Art at the Royal Melbourne Institute of Technology (RMIT) in Hong Kong.



(Two top images)  
*Beyond the Surface*, 2024 - ongoing  
Knitted shredded travel documents  
800 x 15 x 5 cm / 315 x 5 7/8 x 2 in

(Bottom image)  
*Questioning the Line*, 2023 - ongoing  
Knitted shredded maps  
580 cm x 75 cm x 5 cm / 212 5/8 x 23 5/8 x 2 in  
Performed by Movana Chen and Francisco Borges  
at Asia Art Archive, Hong Kong, 2024

\*Performances from 12pm & 2pm daily

Image Credits:  
© Movana Chen, courtesy of Flowers Gallery

For more information and images please contact:  
Echo Guo: [echo@flowersgallery.com](mailto:echo@flowersgallery.com) or Leighanne Murray: [leighanne@atelierpublicrelations.com](mailto:leighanne@atelierpublicrelations.com)  
Facebook @flowersgalleries Instagram @flowersgallery